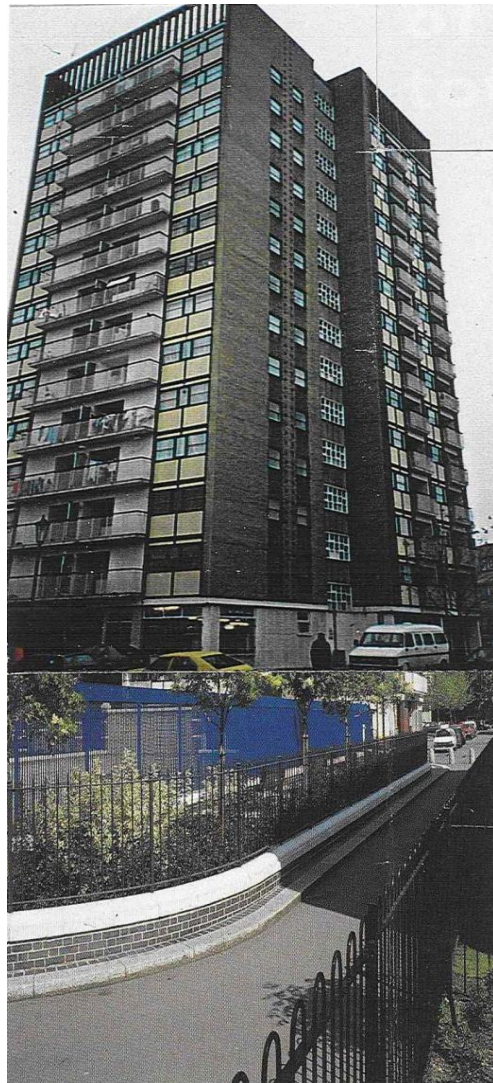




These three very different architectural forms are built to exactly the same density of 75 dwellings to the hectare.



The 3-storey Georgian homes are built to the same density as the 12-storey tower 1960s blocks (about 345 habitable rooms



Hazlewood + Adair Towers before and after 1995



'No social housing' in our luxury tower block, boasts developer in advert for Greenwich flats

Developer's advert boast sparks outrage

The advertisement is a composite image. On the left, a satellite map shows the Greenwich and Woolwich areas with yellow arrows pointing to specific locations. Labels on the map include 'GREENWICH £575 PSF⁰' and 'WOOLWICH £600 PSF⁰'. A central icon depicts a tower with the text 'ABBEY TOWER LONDON SE2 £450 PSF'. Below the map is a red banner with white and yellow text: 'PRICES FROM £249,999¹ REAP THE REWARDS OF CROSSRAIL FIRST PHASE REGENERATION OF CROSS QUARTER - ABBEY WOOD, LONDON SE2'. To the right is a tall, modern tower block with a glass facade and balconies. Below the map and banner is a 'CROSSRAIL TIMES' diagram showing a route from Abbey Wood to Heathrow Airport with stops at Canary Wharf, Liverpool Street, Farringdon, and Bond Street. At the bottom left, a yellow box contains a list of features.

GREENWICH £575 PSF⁰

WOOLWICH £600 PSF⁰

ABBEY TOWER
LONDON SE2
£450 PSF

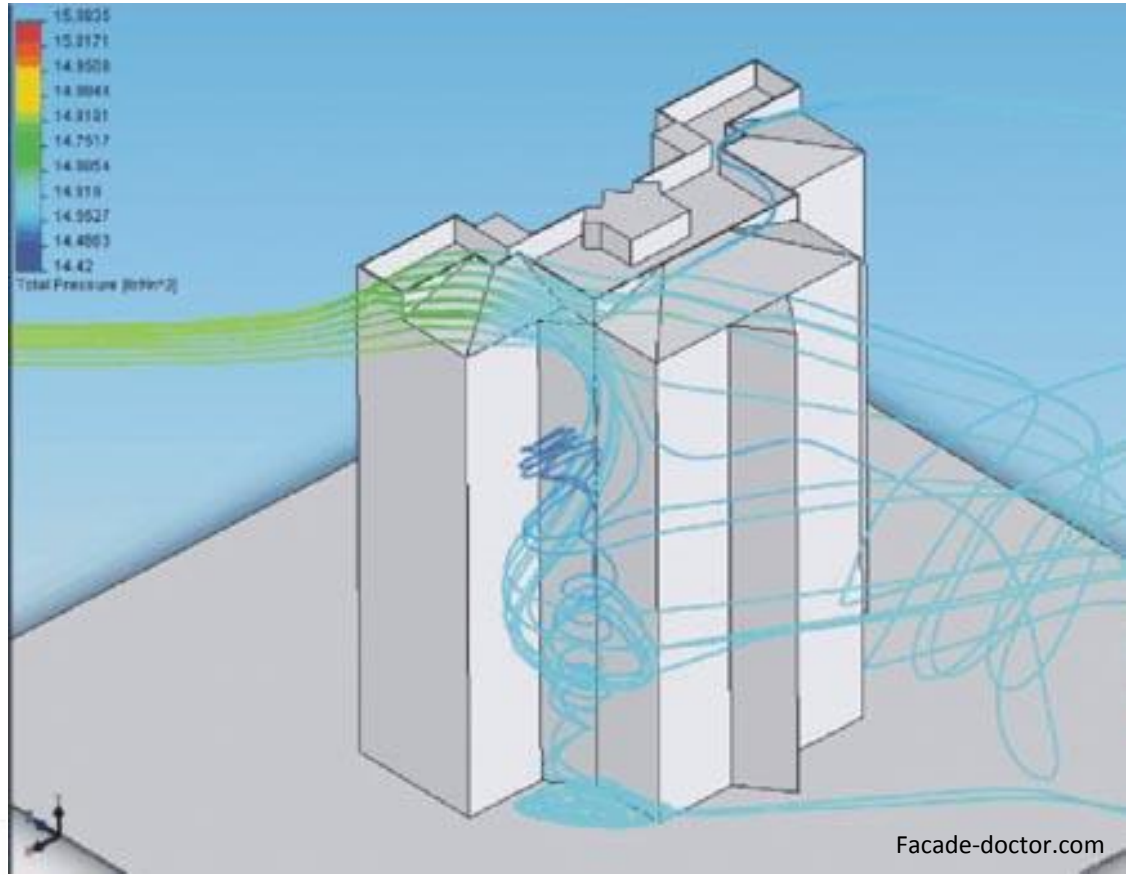
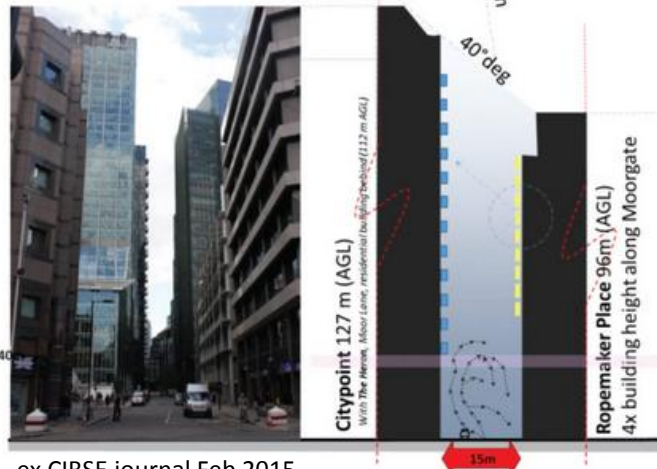
PRICES FROM £249,999¹
REAP THE REWARDS OF CROSSRAIL
FIRST PHASE REGENERATION OF CROSS QUARTER - ABBEY WOOD, LONDON SE2

CROSSRAIL TIMES

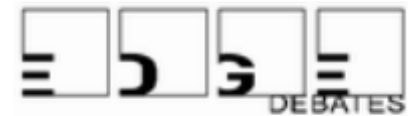
Station	Time
Abbey Wood	1 min
Canary Wharf	11 mins*
Liverpool Street	18 mins*
Farringdon	20 mins*
Bond Street	25 mins*
Heathrow Airport	53 mins*

- 50 metres from Abbey Wood Crossrail (Opens 2018)
- Fully private block with no social housing
- First phase of £85m regeneration scheme
- Developed by Development Securities,

Abbey Wood 2015



ex CIBSE journal Feb 2015





the diverse and walkable city